

**Filtron**

2007. 2. 15

1.

Filtron 가 Computer Integrated Filter Management System Brand Name  
 . Filtron Filter Filter , , pH,  
 , , Conductivity Personal Computer Graph .  
 Monitoring Modem, LAN Internet Host  
 Computer Host Computer Signal Filter ,  
 Filter Management System .  
 Filter 가 .

2.

- 1) , , pH, Conductivity 10 Graph Display
- 2) Filter
- 3) Process
- 4) List 가
- 5) Graph Filter
- 6) Personal Computer Window 95
- 7) System

3.

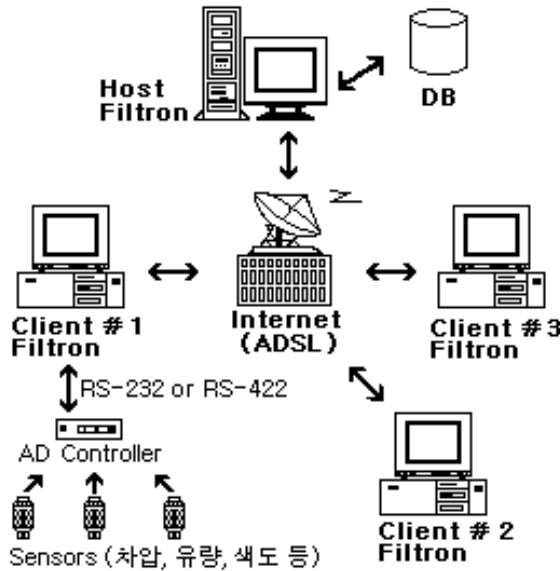
- 1) Filter: Cartridge, Bag, Capsule, Lens, Strainer, Filter
- 2) Membrane module: RO, UF, NF, MF
- 3) Deionizer: EDI, CDI, Mixed Bed
- 4) : , Pump, Heat Exchanger

4.

- Channel : Max. 10
  - ◆ Channel : 4 (4 - 20 mA, 0 - 5 V, On/Off Input Signal 가 )
  - ◆ Channel ( ): 8 (4 - 20 mA, 0 - 5 V, On/Off Input Signal 가 )
  - ◆ Channel ( ): 10
    - 8 Channel: 4 - 20 mA, 0 - 5 V, On/Off input Signal 가
    - 2 Channel: 0 - 12 V, 0 - 24 V 가
- Input Signal: 4 - 20 mA, 0 - 5 V, On/Off ( )  
 0 - 12 V, 0 - 24 V ( )
- Communication Protocol: RS-232 or RS-422
- Data Logging : 1 sec - 99,999 min. ( 가 )
- Data : 1 - 99,999 ( 가 )
- Power Supply: 110 / 220 VAC
- Alarm Signal: Channel Alarm 1 , 1 가
- Personal Computer System

- ◆ Processor: IBM 가 486 or Pentium
- ◆ RAM: 8 MB (16 MB )
- ◆ Microsoft Window 95

5. Filtron System



1) Filtron Software

- **Client Filtron:** AD Controller 10, Personal Computer, Communication Personal Computer, Date Processing Display, Alarm Signal 가, Data File, Internet(ADSL: Asymmetric Digital Subscriber Line) 가 Data File, Host Computer, 가 Data File, Logging, Graph Display, Filter, Data, Data Processing, System, Filter, Filer, Data, 가, Client Filtron, Filter, Filter, Filter, Filter
- **Host Filtron:** Main Computer 가, Client Filtron, Filter, Filter, Filter, Filter

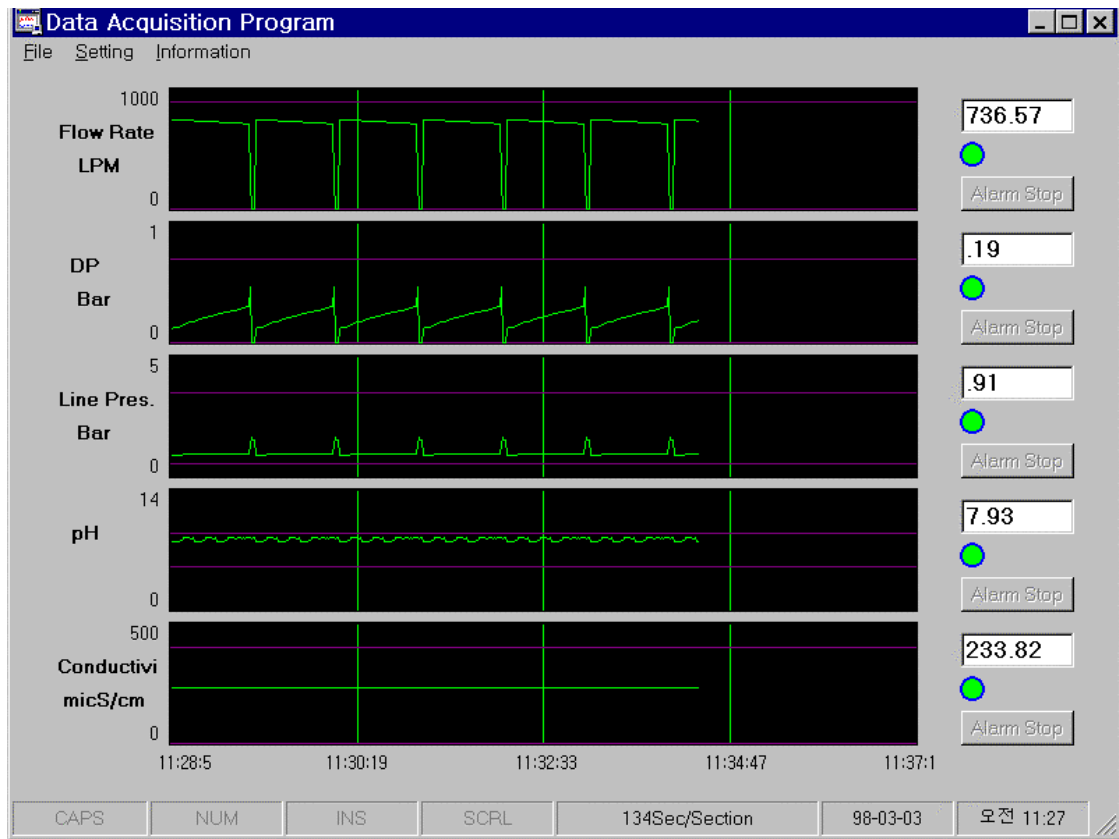
- 2) **AD Controller:** Electronic Signal Processing Personal Computer, Personal Computer, Electric Signal

3) Controller : 24 V Electronic Signal 가  
 : 4 - 20 mA, 0 - 5 V, On/Off 가 ,  
 : 0 - 12 V, 0 - 가 .  
 : AD Controller 가 .

- ◆ Transmitter: Filter Electronic Signal
- ◆ : Electronic Signal
- ◆ pH : pH Electronic Signal
- ◆ : Electronic Signal
- ◆ : Electronic Signal
- ◆ Conductivity : Conductivity Electronic Signal
- ◆ : Electronic Signal
- ◆ Switch: On/Off Switch, Limit Switch, Reed Switch, Magnet Switch, Level Switch, Relay On/Off Signal 가 Switch
- ◆ : Viscosity, COD, Concentration, Color, UV-Absorption, Level Electronic Signal 가 가 .

6. Monitoring

1) Display



Filtron Display 10 ( 5 Line  
 5 Graph )  
 Graph .  
 Alarm Alarm Lamp 가 Buzzer 가 .

Section , Graph Line, Display , Filter

2) Alarm

Channel Setting

Logging Interval    분 1 초

위험 허용 시간    5 초

Channel#	Signal Range	Data Range	Unit	Description	Alarm Set
<input checked="" type="checkbox"/> 1	4mA-20mA	0 ~ 1000	LPM	Flow rate	<input checked="" type="checkbox"/> 0 ~ 900
<input checked="" type="checkbox"/> 2	4mA-20mA	0 ~ 1	Bar	DP	<input checked="" type="checkbox"/> 0 ~ 0.7
<input checked="" type="checkbox"/> 3	4mA-20mA	0 ~ 5	Bar	LP	<input checked="" type="checkbox"/> 0 ~ 3.5
<input checked="" type="checkbox"/> 4	0V-5V	0 ~ 14		pH	<input checked="" type="checkbox"/> 5 ~ 9
<input checked="" type="checkbox"/> 5	0V-5V	0 ~ 500	mic S/cm	Conductivit	<input checked="" type="checkbox"/> 0 ~ 400
<input checked="" type="checkbox"/> 6	0V-5V	0 ~ 20	도	탁도	<input checked="" type="checkbox"/> 0 ~ 10
<input checked="" type="checkbox"/> 7	On/Off	Off ~ On		안전 Valve	<input checked="" type="checkbox"/> ~ On
<input checked="" type="checkbox"/> 8	On/Off	Off ~ On		By-pass	<input checked="" type="checkbox"/> ~ On

OK    Cancel

Data , Alarm