

Giant Thread Filter(MTG)

2007. 2. 2

1.

Giant thread filter(MTG) 3 μm 가 가 Max. 400 m^3/h
 Cartridge 가 Filter 가
 Filter 가 가 가
 Cartridge filter Cartridge
 Filter

2.

- 1) 가 3, 10 μm
- 2) 가 Compact
- 3) Filter
- 4)
- 5) 가
- 6)

3.

- 1)
- 2) RO, UF, MF membrane
- 3)
- 4)
- 5)
- 6)

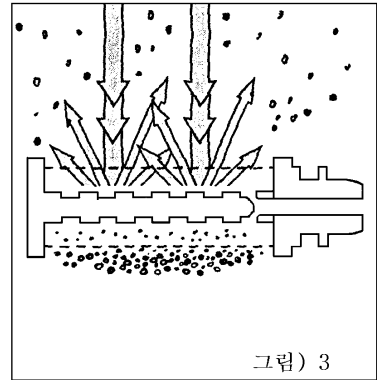
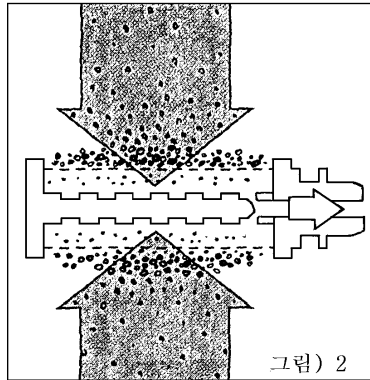
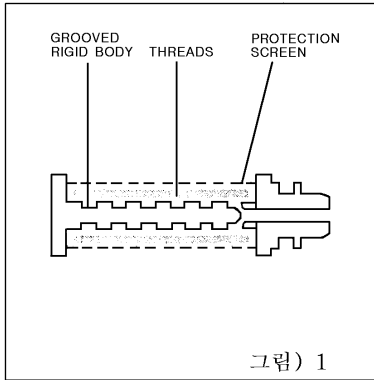
4.

: Max 400 m^3/h
 : Textile thread (Multi-layer)
 : down to 3, 10 μm
 : 2 Ea x 150A
 : Min. 0.2 bar - Max. 10 bar
 : Max. 65
 : 6 - 10 min
 : 3 - 5 $\text{m}^3/$
 : 20 m^3/h at 8.5 - 9 bar
 Clean filter : 0.2 bar ()

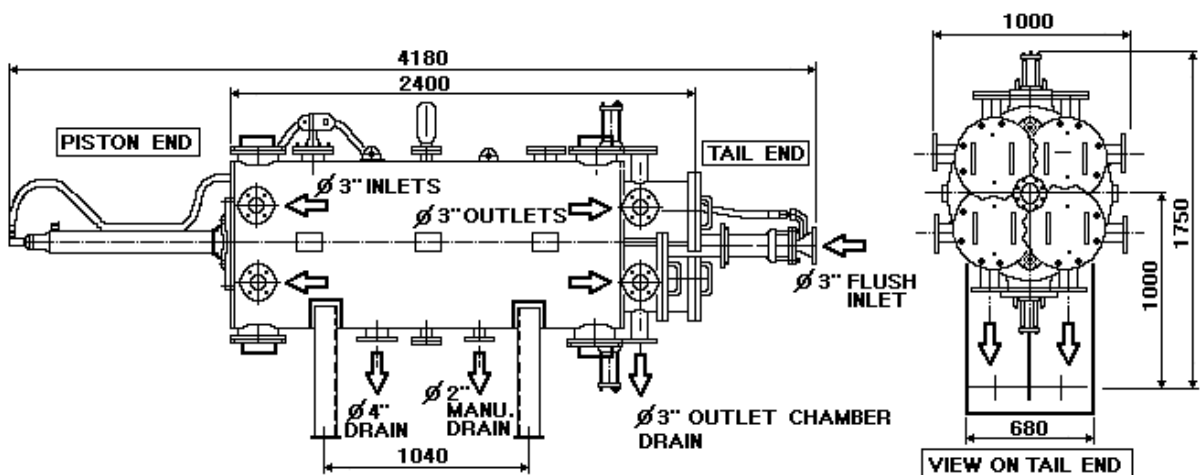
Note) 가

5.

Thread filter	Cassette	가	Cassette
1)	Stainless steel	Plastic	
2)	Wire mesh		Plastic
가	Cassette		3)
	Spray nozzle		
	Plastic		

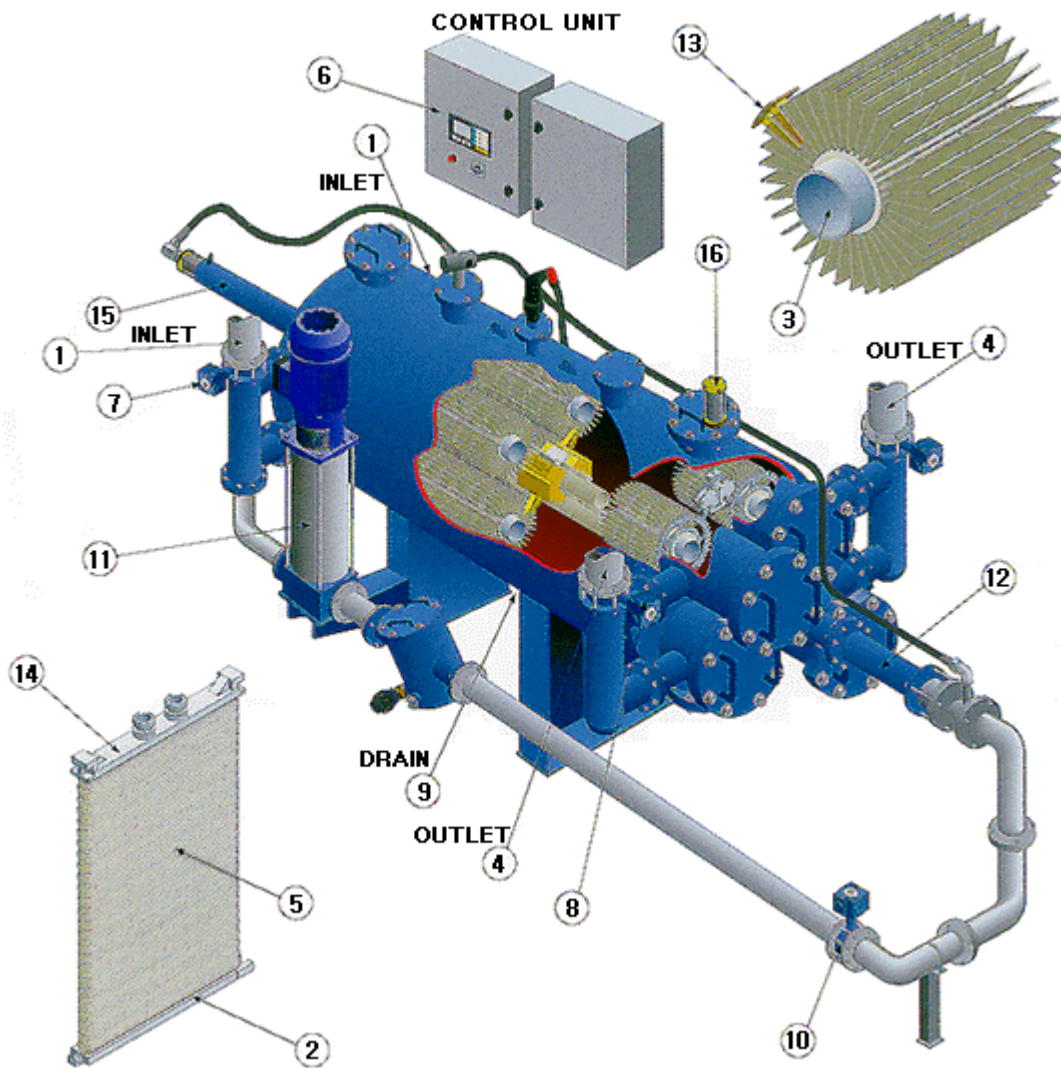


6. Dimensional Drawing



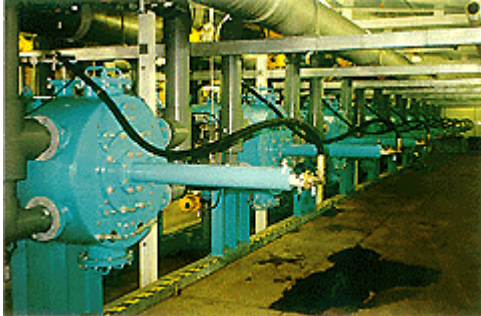
7.

	Filter		Cassette		
	가		가	Filter	가
		valve	가	Controller	가
	pump	가	Shuttle pipe	valve	가
	Cassette	가		valve	Spray nozzle
					Plastic
			Cassette		
Filter housing		valve		Index mechanism(16)	Cassette
Piston assembly	Nozzle			Cassette	가
Nozzle					Cassette
가	1	Filter		가	
		valve		pump	가
	valve	Filter			



8.

1) Drinking water (Burpham Water Treatment Works, U.K)



2) Swimming Pool (Aquatic Center, Australia)



3) Waste Water Recovery
(Abekawa Paper Mill, Japan)

